

Increase the profitability of your business with genset radiators from TSM

Do you sell radiators or cooling packages with your engines, or offer them as a part?

Then we're the provider for you. TSM is a cooling package/radiator manufacturer with branch and plant locations across North America. Every day, we build custom and OE replacement units for North America's most popular industrial applications, including Detroit Diesel Series 60, Caterpillar C15, C18, 398, and many others.*

Our replacement units aren't simply OE copies, they are designed to correct the OE issues that caused the part to fail. We offer more than 60 standard CIRs, and build custom units in our plant in Dallas, Texas. We offer CIRs with a variety of coolers such as charge air cooler, oil coolers and fuel coolers.

Multipass radiators are also available, to allow coolant to spend more time in the radiator for additional cooling.



Every TSM product meets or exceeds OE specifications for performance and "drop-in" fit.

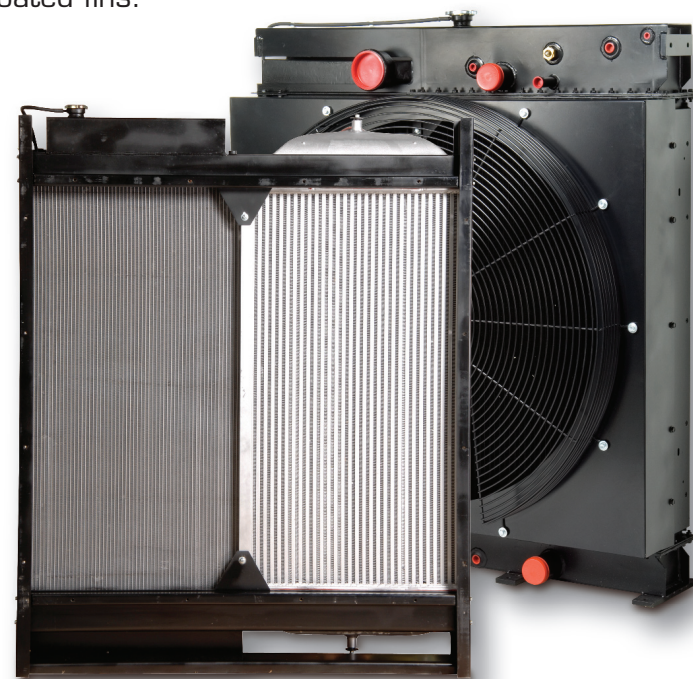
Our high-quality standard features include:

- Powder-coated steel parts in all bolted units (parts are powder-coated in 24-48 hours) to provide superior adhesion and corrosion resistance.
- Dual form used for duplication of solder-on tanks.
- Heavy 7-gauge steel parts in most units.
- Corrosion-resistant tanks.
- Solder-coated fins.

Fastest turn in the industry

Imagine placing an order for a CIR and receiving your unit in less than a month!

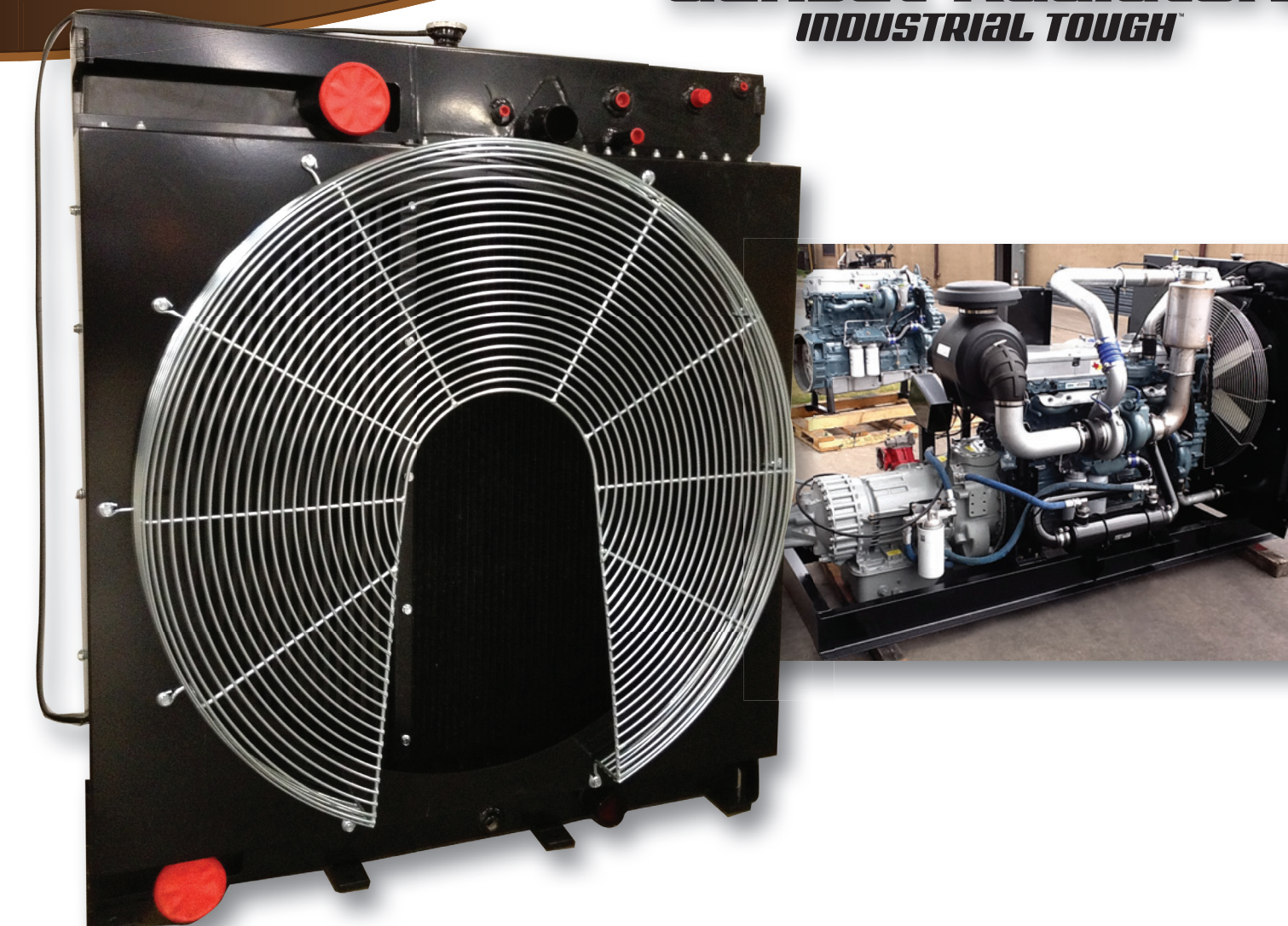
We have the fastest turnaround time in the industry with a typical shipping/delivery time of two weeks from order placement.



TSM: The hottest name in Heat Transfer ®







For more information about how we can design and build a Complete Industrial Radiator for you, contact your local TSM Branch. www.thermalsolutionsmfg.com

Genset Radiators
INDUSTRIAL TOUGH™



Complete Industrial Radiators
Better Than Original Equipment

Products for every popular brand including:

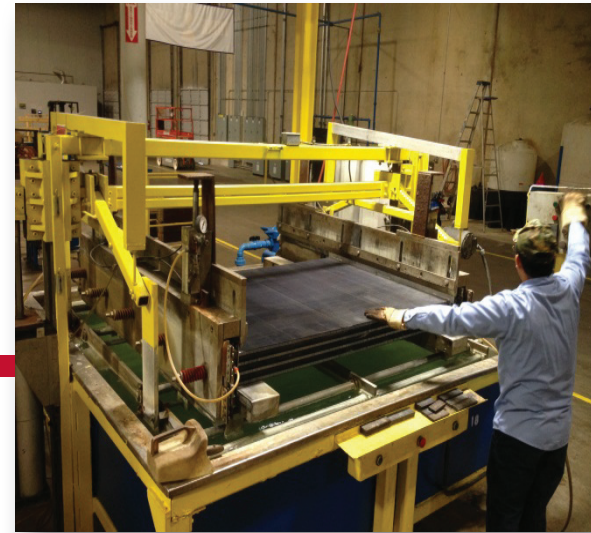
- | | |
|--|--|
|  Caterpillar |  Cummins |
|  Detroit Diesel |  Komatsu |
|  Lincoln Welder |  Waukesha |



Our Complete Industrial Radiators are better than OE because they're designed to correct OE issues

Because we build our own cores, we can offer a wide variety of core configurations and core options such as tube guards and no-lead solder. Lead-free cores provide many times the fatigue strength of conventional cores.

All TSM CIR cores and steel tanks are tested prior to assembly. Completed CIR units are tested with a submerged water test. **Not a single CIR has ever been returned due to overheating or cooling related issues.**



Most TSM steel parts are fabricated in-house using the advanced engineering and technology of our AccuPress Modular Inline Press equipment.

By doing this job ourselves, we can bend the thicker and longer steel parts required for large units and customized parts.



We build fittings and connections for our CIR line in machine shops located at our own facilities. This means we can custom build new units and repair complex and variably sized units in-house.

Our own on-staff certified welders produce precise, high-quality parts. TSM welders are experienced in reading and reviewing mechanical drawings, and produce extremely accurate parts.



All CIR assemblies are completed by highly trained and experienced TSM employees.

We build every type and size CIRs, including extremely complex units for engines with power requirements of up to 1100 HP.

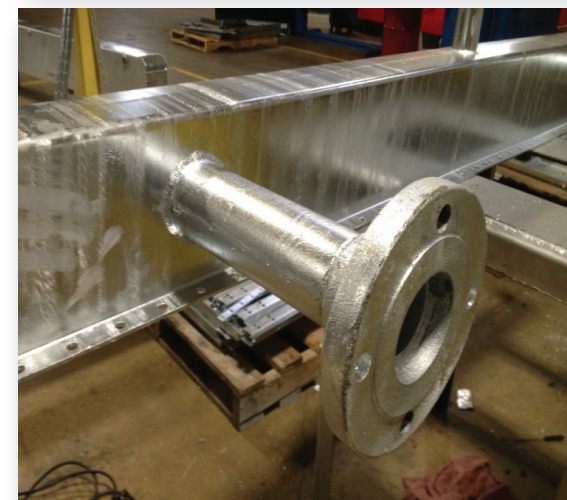


Every individual core and steel tank we build is strength and quality-tested prior to assembly into the CIR.

Once the unit has been assembled, it's tested again as a complete unit using a submerged water test to ensure it is leak-free.

Every TSM product is built to resolve OE-failure issues, and meets or exceeds OE specifications for both performance and "drop-in" fit.

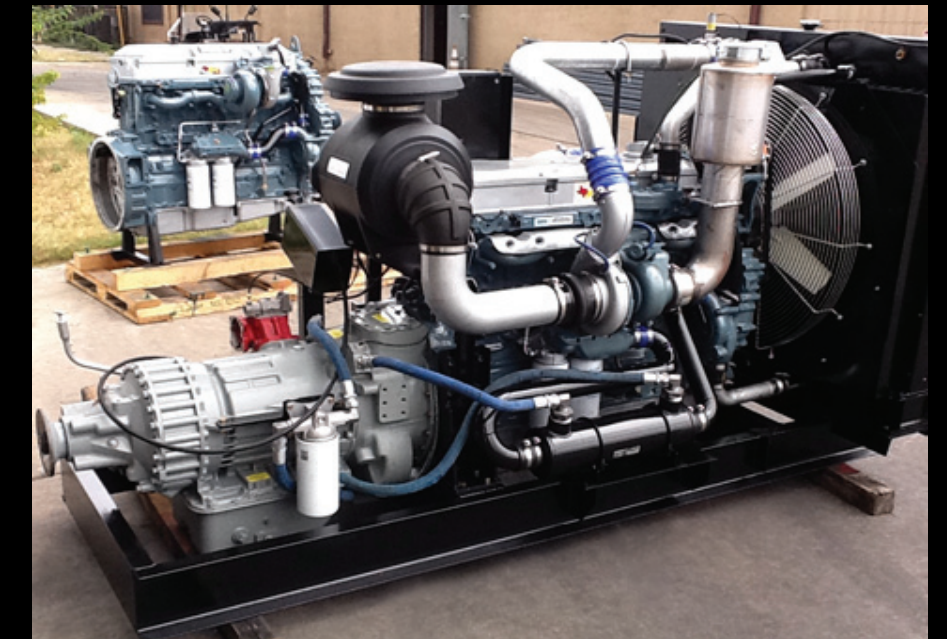
That's why TSM genset radiators are better than OE!



CAT 3512 C, (35 Series, 12 Cylinders)



CAT C15 (525 HP)



Detroit Diesel Series 60 (475 HP)

For more information, please contact your local TSM Branch.



Detroit Diesel 16V2000

*Note: Caterpillar and CAT; Detroit Diesel; Lincoln Welder; Cummins; Komatsu; and Waukesha are registered trademarks of their respective owners.